



PORT STEPHENS COMMUNITY ARTS CENTRE

NEWSLETTER

August 2023

Cultural Close, off Shoal Bay Road, NELSON BAY. 2315

In this issue:

- President's Report
- Gift Certificate
- Café News
- Papercraft
- Peoples Choice
- Gallery Manager
- Exhibition Team
- Pottery Groups
- Monday Morning Painters
- Spinners and Weavers
- Monday PM Watercolorists
- Featured Potters
- Desk Duty Roster
- Featured Artist
- Membership reminder
- Patchwork Groups
- Garden News
- Fusion Group
- The Woodies
- Embroidery Group

President's Report

We have received advice from Service NSW Business Coaching, on the subject of identity and image. Currently Port Stephens Community Arts Centre is represented by three different logos as well as numerous different names. The Committee has decided, based on the advice received, to adopt one logo going forward. We are now in the process of updating all documentation.



The chosen logo already appears on name badges and gift bags.

Thank you to all the members who have renewed their membership.

The Port Stephens Examiner Business Awards voting, is open once more. We feature in the category Outstanding Antiques, Art, Crafts and Gifts. Please vote for us by scanning the QR Code. Or click on this link

<https://thebusinessawards.com.au/65480/community-arts-centre-port-stephens>

Select Vote for this business enter your

name and email address. You will then need to open the email you receive to validate your vote.

Please be considerate and not park in the Disabled Car spots. There are five Disabled parking spots which are reserved for members who have RTA Disabled Parking Permits. If you need to park in a disabled spot to unload your vehicle, please ensure that you move your car once you have unloaded. Please take care on the road along side the Gallery, remember this is a two way road and all road rules apply including the direction in which you park your car.

We are all travellers in life and the best we can find on our journey is a friend.

Meryl Miller



Gift Certificates

Here's a preview of the new Gift Certificate that customers will be able to purchase from the sales desk. There will also be signs placed around the gallery spaces, to make our visitors aware of this offer.

Di Adamson

Port Stephens Community Arts Centre
ABN: 32 376 556 236

Gift Certificate

TO: _____

FROM: _____

Issued by signature: _____

Issued by (Print Name): _____

VALUE: \$10.00 Ten Dollars Only

DATE: _____ Book No. _____

Receipt No. _____

Valid for 3 years from date of issue.
This certificate cannot be redeemed for cash.

Cultural Close, Shoal Bay Road NELSON BAY
(back of oval, near Diggers)
Web: artscentrenelsonbay.org.au
Phone: 4981 3604

Café News

We are planning to reopen the café in late August on Saturday and Sunday mornings but we need a couple more helpers.

It is a friendly, fun, active environment and you even get a free coffee!

Talk to one of the new managers; Debbie Beatty, Antonia Creese, Kathleen Murray and Liz Opielinski or email the office pscac.office@artscentrenelsonbay.org.au that you are interested in helping in the café.

We'll be in touch soon to get the roster organised.



Papercraft

Don't forget those special dads this Fathers Day. We have cards to suit everyone at the PSCAC Gallery.

Antonia Creese



People's Choice

The winner of the People's Choice Award for the latest display period goes to **Ileana Clarke** for her painting **'Tree Windows'**.

Congratulations Ileana!

Desk Duty volunteers please encourage our Gallery visitors to place an entry in the People's Choice Award. All items in the Gallery can be selected for a vote and often encouraging visitors to enter the People's Choice results in further sales.

Melanie

Samples from our Current Exhibition. Above - *Wild Flowers* and *Pot Plants* by Carol Gilmour. Below - *Blue Notes* and *Favourite Tones* by Lizzy Paterson.



Gallery Manager

Thank you to everyone who got busy with needles and yarns - our Beanie Muster produced far more than I had anticipated, with over 80 beanies contributed by members. This fun display included such a range of styles, sizes and colours, and certainly invited plenty of comments and compliments!

The photography exhibition in the Annex has been very successful, with quite a number of works sold. There will soon be a number of different areas in the gallery where you can find photographic works, ranging from large framed pieces to mounted photographs and cards.

Printmakers will take over the Annex wall during August, so be sure to pop in and see the variety of work they produce.

Our next exhibition, *Our Garden*, will be in place from 8 August. Come into the gallery and see how we welcome all things growing and blooming. This theme will tie in beautifully with our Spring Affair, to be held on Saturday 9 September. Groups are preparing their displays and activities, and I hope many members will contribute small cakes, biscuits and slices for visitors to purchase. We will also have many 'pink tag specials' - sale items that have been donated by members.

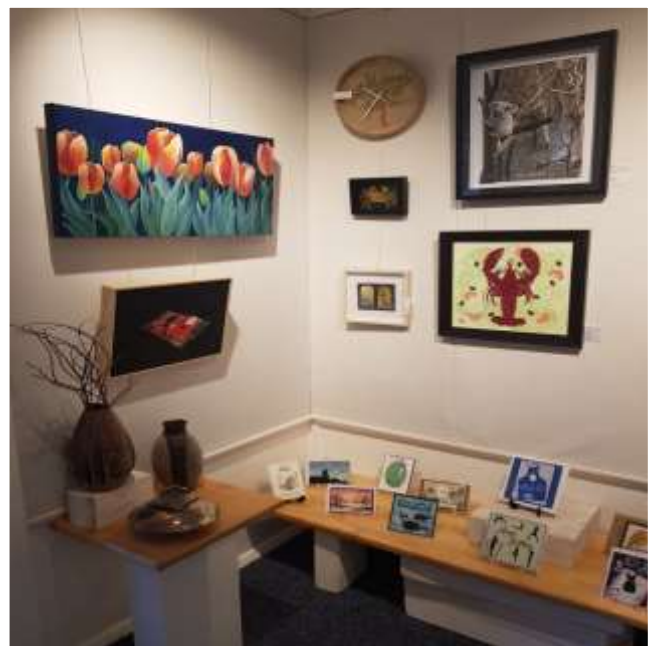
We hold this event to encourage more awareness of what our centre offers to the community, and as an essential fund-raiser. If you would like to help by delivering fliers, please let me know how many you'd like, and what area you would cover. My email is Rnd2315@gmail.com It would be best if



these are distributed between 1-7 September. Craft items for sale need to have the date written on the back of the tag. **NO DATE = NO DISPLAY.** Please monitor your stock; if items have been on display for more than 6 months, you need to take them home for a holiday. They can be returned a few months later, but must have a current dated tag attached. New stock must go into the drawer in the wrap room - do not put anything out on the gallery shelves.

Our Featured Artist calendar now has a vacancy for the 1 November to 12 December slot. If anyone is interested in taking this booking, please contact me.

Di Adamson



Port Stephens Community Arts Centre Newsletter

Exhibition Team

Thank you to all our members who create and engage in making our Centre a fine place to belong.

It's our place where we meet and share life stories. Where we reduce the stresses of life, combat loneliness, and make life feel more meaningful.

Our Gallery is a welcoming place full of life and colour.

Thank you to our Team of display hangers.

Marianne will be taking over the role of coordinating the Feature Artist Wall.

Thank you to Christine for her time and display skills in making our Artists shine.

Next Exhibition

Our Garden 8/23 - 9 August to 19 September

Please remove your Hall paintings and deliver two paintings for the new exhibition on Tuesday prior to hanging.

Cheers

Marianne, Judy, Bev and The Team.

Pottery Groups

Working with clay continues to delight, challenge and inform us.

Experimentation is rife - even with the understanding that glaze technology will take several lifetimes to understand!

The beauty of clay is that it enables your imagination to run riot, with only the limitations of gravity. Modelling skills can help as well ... see Christine and Grants wonderful examples.



It's been pretty cold in the Barn this winter, but everyone continues on in true potters' fashion of enormous woolly sweaters and beanies.

Carole Driver

Monday AM Painters

We are now half way through the year and memberships have been renewed so preparation for our annual Spring Affair is in full swing. All members are encouraged to participate as this open day is a showcase for the public to see what happens at our Arts Centre.

Our group look forward to welcoming our Karingal Pre School friends each year and were delighted to have them visit our Arts Centre early in June. It is such a joy to see the children experience the wonders of nature in our garden and to see them extend their imagination through play in our fairy garden.

Their enthusiasm when they critique items in our gallery never fails to bring a smile and we are always amazed at the results when they create a painting. Proving it matters not how young or old one is we must never stop painting.



Many thanks to all members who assisted on this occasion. Attached is a picture of a few of the paintings the children created on the day.

Happy painting my friends.

Robyn Killen



Spinners & Weavers

A recent visit to Sicily provided the opportunity to visit Erice famous for its 'trappita' hand woven rugs made from recycled fabric cut into strips. The bright colours and geometric patterns are handed down within families from mother to daughter and many patterns can be traced back to the middle ages.

The spinners and weavers are exploring other woven rug styles including rya knots, thought to have been brought by the Vikings from Russia to Scandinavia around the 9th century and soumak which originated in Iran and Afghanistan in the 17th century. We can replicate these woven styles with modern rigid heddle looms and luxury fibres. A new twist on an old tradition.

Melanie Delaney



Rya knot.



Soumak weaving

Monday PM Watercolour Painters

Painters Spring Affair Contributions for Saturday 9 September

Its Spring Affair time, and a fun day is being organised for all to participate in.

We would like to invite all centre artists to contribute. Each contributor is allowed three canvases or framed paintings no larger than 30 x 40 cm depending on space. At least one item is to be donated to the centre - more if you wish. Three unframed works can also be displayed as well - same conditions as paintings. Helpers will be needed in all areas during the day.



Spring Affair 2017

There is a roster in the Westralia Room where you can fill in ways in which you might like to help with the event.

Nada Yonge

Featured Potters



Rosters

I would like to thank everyone who helped me in July filling a few positions on short notice. Again, I ask that if anyone can't make the day they are rostered on please try to find someone to take your place.

Can I please ask everyone on Desk Duty to keep a watchful eye on our visitors, discretely of course, as there have been reports that some items have gone missing.

I would like to stress to those on afternoon shift that they make sure all closing procedures have been completed at the Centre.

When on Desk duty it would be appreciated if you could do the following. When you sell a:

Painting: Phone either Marianne Newton, Judy Jones, or Bev Henry and let them know the name/number of the painting

and the artist.

Bonsai: Phone either Marilyn Anderson or Melanie Delaney .

Mosaic: Phone Kim Reilly.

All the contact details are on the Notice board in the room behind the Desk.

The new Gift Certificate Folder is under the desk. The instructions have been updated.

Thank you everyone for your time volunteering to do Desk Duty, without your help the Centre would not operate successfully. I am sure you are all aware by now that the Café will be opening in Mid August. If anyone can add a week-end shift to their schedule I know Antonia would be most grateful.

Pauline Commins

Featured Artist - Margaret Brace

After moving to Nelson Bay and trying out some of the art options at the Port Stephens Community Arts Centre, Margaret thought that she did not have the confidence for the finer arts and decided to try her hand at mosaics. At the time there wasn't a mosaic group so Margaret started on her own at home by visiting the Salamander Bay Recycle Centre where she picked up tiles to create her first mosaic within her garden. Margaret experienced her ah-ha moment when Ruth Conley formed the Mosaic Group in 2014 and Margaret was a founding member. She states that Mosaics bring her an enormous amount of joy as she watches the design come together.

Ruth handed over leadership of the Mosaic Group to Kim Reilly earlier

this year. The Mosaics Group meets on the 2nd and 4th Wednesday each month 10am – 1pm. They are a vibrant group of twenty mosaic enthusiasts who make many interesting works of art. The Mosaic Group mostly create their works of art for their own pleasure stating that they fall in love with their work and can't bear to part with their creations.



MEMBERSHIP RENEWAL DUE

If you haven't renewed your membership please do so.

Patchwork Groups

On Thursday, 15 June, Thursday and Tuesday patchwork groups held a Cancer Council Biggest morning tea event. There were a large number in attendance including many from other PSCAC groups and friends who were invited. The food supplied by both groups was very scrumptious and the Trivia Competition held by myself was well received. Much fun was had trying to guess the answers with a Thursday group table winning the competition prize. We had lucky door prizes and a raffle as well. \$400 was raised and along with online donations, \$430 was donated to the Cancer Council. Thank you to everyone involved, we had a wonderful get together.

Wendy Harvey

Tuesday Patchwork ladies are booked to have a sewing retreat at Tocal in early September and eight ladies are attending. We have made a beautiful quilt for a charity raffle (pictured). The ladies have also put together three small boys quilts but we haven't decided whether to donate or sell them in the gallery.

Wendy Barwick



GARDEN NEWS

Work is underway with fixing up the propagation area at the top of the garden. We....(and that's a 'royal' we as Wayne is doing most of the work!).....are widening and flattening the path in front of the plants to make it more user friendly for the workers. It will also provide enough space for us to hold our yearly Spring Fair plant sale there instead of moving everything to the front of the building. We are organising, repotting and weeding as we go and trying to improve the quality and variety ready for sale.

Regarding the plant sales, can the members please note that the plants that are for sale are on the plant stand at the entry to the centre. The ones in the propagation area are our stock, not for sale and haven't been priced. Please don't send people there to help themselves. If there are any enquiries, they can be passed on to me or Wayne, Moira or Robyn.

It's PLANT DONATION TIME! We need to stock up for the September Fair so if you have any healthy, good looking plants to donate, we have three drop off zones; in the garden in front of our #2 store room downstairs, under the seat at the Plant stall at the entry of the centre or at the propagation area itself. All will be appreciated and thanks in advance. Empty pots are always needed too.



And its also WEED TIME! Check your garden beds for chickweed and ribwort as these blended with the flowers of perennial basil, dried parmesan, olive oil and pine nuts makes a yummy and healthy pesto. Freezes well so you can make a big supply.

Cheers

Helen and the crew.

Fusion Group

In June, our group continued with some weaving techniques using fabric and raffia and then branched out into more free form weaving experiments. Then we took up a challenge from the local Breast Cancer Support group to make some Blingy Bras which they use to decorate their events. This was a great excuse for our group to go nuts with all the beads, sparkly, garish and lacy bits that accumulate in our cupboard! Here are some of our creations.

Carolyn Virgona



The Woodies

Our AGM was held on 11 July and the following members were elected to our Executive Committee -

President -	Roger Delaney
Vice President -	Ros Leitch
Secretary -	Rod Wither
Treasurer/Public Officer -	Keith Bryers
Workshop Manager -	Dave Bear
Community/Liaison Officer -	Ines Thomas
Elected Representative -	Allen Beard
Elected Representative -	Charlie Kuhn

Congratulations to all and particularly the three new members, Ros Leitch, Rod Wither and Allen Beard.

Our new morning tea area is coming along nicely! The new shutters are installed and look good. We can pull them down if its windy or wet.

Two new tables were made by Bob Parrish, ably assisted



at Salamander shopping centre.

PSCAC members are most welcome to come up, have a look and a cup of tea.

Roger Delaney

by his apprentice, Stewart Upton. The table ends were made from a donated round beech table, the sides were made from donated spotted gum and the middle was made from a donated kitchen bench top that came from Bunnings! One of the old green tables was painted white and is now in the café outdoor area.

The new white chairs replace the old benches and are much more comfortable. They were donated from the food court

Embroidery Group

While I have been holidaying in FNQ and working on the donated piece (far right) the other ladies in our group have been working on some lovely pieces. Wendy has almost finished her baby blanket with a bear motif (top right), Noela is working on a cushion (middle right) and and our new member Chantal is creating a gold work piece (near right).

Penelope

