



PORT STEPHENS COMMUNITY ARTS CENTRE

NEWSLETTER

November 2021

Cultural Close, off Shoal Bay Road, NELSON BAY. 2315

In this issue:

- President's Report
- New Board
- Christmas Closing
- Gallery Entry Conditions
- Exhibition Team
- Bonsai Group
- Quilling
- Monday PM Painters
- Print Makers
- Artist Profile
- Feature Artist 2022
- Fusion Group
- Raffle Winner
- Christmas Display/Raffle
- Embroidery Group
- Saturday Painters
- Monday Watercolour Painters
- Art Prize
- Patchworker Profile
- Garden Group
- Pottery Groups
- Gallery Manager
- Life Drawing
- Potter Profile
- Tai Chi
- Woodies
- Monday AM Painters
- Plein Air Painters
- Paper Craft
- Mosaic Group

From the President

It's been great to open the Arts Centre again and be back with our groups creating and sharing our stories.

There have been a lot of chores to get done to ensure the Centre remains COVID Safe. The virus with all its associated risks and necessary precautions will remain with us for quite some time, so we have to be vigilant, taking care of ourselves and those around us.

Thanks to all of the Group Leaders for being active in getting their group members checked and settled in again. Thanks also to Chris Morgan who has embraced her role organising the gallery roster with enthusiasm!

We can now look forward to opening the Gallery to visitors on 1 November. COVID Marshals will be on duty for the first few weeks, to support the Gallery volunteers and deal with any problems.

It's planned to open the weekend Café around mid January.

The Board has welcomed two new members voted in at the AGM on 14 September. They are our Secretary, Louise Leddie and Melanie Delaney, Director for Group Liaison. They both bring great skills and energy to the Board and have had to hit the ground running this past week!

Groups now need to discuss and plan how they will spend their Skills Enhancement grant money.

All the chosen proposals for tutors, workshops or equipment need to be given to Meryl Miller by 31 December and the workshops held (and money spent) by October 2022.

Just a reminder to all members attending groups in the Centre and the Barn or working in the gallery, café or garden- please wear your name badges.

See you at the Art Centre, *Carolyn*

BOARD OF DIRECTORS 2021-2022

President	Carolyn Virgona	0409 747561
Gallery Director	Di Adamson	0414 756 118
Secretary	Louise Leddie	0474 884 328
Treasurer	Noelene Fraser	0417 228 529
Publicity Director	Meryl Miller	0409 455 529
Vice President	Meryl Miller	0409 455 529
Maintenance Director	Joana Johnston	0488 561 849
Group Liaison/WH&S	Melanie Delaney	0409 651 650

Gallery Entry Conditions

We are looking forward to visits from the public doors will be open from 1 November 2021. Please follow the Gallery Entry Conditions and enjoy your visit. Thank You for cooperating.

Meryl Miller

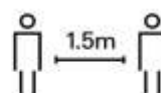
What you need to know before visiting



Proof of double vaccination



Face masks required



Maintain physical distance



QR check-in



Gallery closing dates for Christmas are:

Friday 24 December Christmas Eve closes at 1pm

Saturday 25 December Christmas Day closed all day

Sunday 26 December Boxing Day closed all day

Sunday 31 December New Year's Eve closes at 1pm

Monday 1 January New Year's Day closed all day

Port Stephens Community Arts Centre Newsletter

Exhibition Team

As we anticipate the Gallery opening on 1 November, we look forward to many new and exciting exhibits.

The Current display '**What's On Your Plate**' will remain in place along with the Hall Exhibition.

Our next Exhibition changeover will be 15 December – Port Paradise (Dated 12/21)

On Monday 25 October the PSCAC Exhibition Calendar Planner for 2022 was initiated.

Some new and exciting



Marianne and Judy
Co-ordinators

exhibition themes were received from our members.

2022 Exhibitions will bring lots of surprises to all who visit PSCAC. We cannot wait to exhibit all of your wonderful creations.

If you are a new PSCAC Member, and would like to join the Exhibition Hanging Team, please do not hesitate to contact Marianne or Judy on Monday afternoon in the Westralia Room.

Bonsai Group

NSW is opening up again and we are able to have our Bonsai meetings once more. It will be necessary to show proof of having had double vaccinations and to check in via the QR code. Masks will also be mandatory for a while and it is advisable to bring your own cup for morning tea. We welcome new members who have been double vaccinated but it is essential to contact Liz Weiss on 4981 4464 if wishing to attend as we do have to abide by the distancing rules.

It was regrettable we were unable to hold our annual Bonsai exhibition at the Arts Centre for the second year in a row, fingers crossed for 2022. Our trees should be looking in good condition with the rain and mild temperatures we have had this Spring and I am sure we are looking forward to showing our trees at Thursday's meeting.

Happy Bonsaing!

Carol Rigby



Quilling

Hi everyone! Welcome back!

Our small Quilling group is ready to meet again on the 2nd and 4th Wednesdays of the month. We meet in the Manoora Room from 12.30pm. Pop in and say hi if you're nearby. We always have room for new members.

Most of the group are keen to continue to make Quilled earrings. We may even learn new jewellery techniques using different mediums to challenge ourselves.

Wendy Lane



Monday PM Painters

Motivation by our own values, sense of enjoyment and growth is the essence of the creative times deeply missed during the recent lockdown.

On Monday 18 October, under the strict Covid Regulations, the door to the Westralia Room swung open. Our masked members were back with their paints and canvases ready to face the 'New Norm', creating and enjoying Community and Friendship.

Marianne Newton



Print Makers

The Printers are busy getting ready at home for the up and coming exhibition starting on the 23 December.

It will be wonderful to get together again shortly after such a long time being in lock-down.

I'm looking forward with interest to see what everyone has come up with. We certainly have missed the printer.

Milja Philipson



Artist Profile Robyn Killen

Our member Robyn Killen stepped down from the Port Stephens Community Arts Centre Board in September after 12 years of dedicated service as Secretary to the Board. We thank Robyn for devoting endless hours of her time volunteering at the Art Centre. We are so lucky that Robyn took up art and that she has shared her passion for art and her leadership skills for the benefit of our community!

We hope that with more time on your hands you will be able to pursue your great love of oil painting.

Our members are proud of the fact that Robyn received a Port Stephens Medal in the inaugural Cultural Endeavour category from the Port Stephens Council on Australia Day 2018.

Art has always held a high priority in Robyn's life leading her into a commercial arts course at East Sydney Tech. This stopped abruptly when she married and went to live in the beautiful Bylong Valley before moving to Nelson Bay with her family in 1979.

Her love of nature and drawing was ever evident and in 2007 time allowed her to pursue her love of painting. Courses in watercolour and acrylic and attending workshops under the



guidance of a highly regarded Australian traditional landscape oil painter have served to confirm Robyn's love of landscape painting. Robyn is now a very accomplished artist in the use of oils, her works being highly sought after locally and interstate.

FEATURE ARTIST 2022

Would you like to showcase your work next year? Your work must be two dimensional only and suitable to be hung.

ie. paintings, prints, drawings etc. on canvas or framed under glass. If you are interested please contact me

christine.a.leaming@gmail.com

Fusion Group

Our group have been kept busy during the long lockdown with a weekly challenge. Each week a subject was offered for us to make in textiles. Some members kept each piece to a certain size. Thus making several pages for a book. Others treated each topic individually.

During the lockdown we enjoyed getting together at Dutchies Beach when the weather permitted. Now restrictions have been lifted we will be meeting back at the Arts Centre. We are busy making a series of fancy aprons that will be on show when the gallery is open to the public.

Sheila Francis.



CARDS FOR ALL OCCASIONS RAFFLE WINNER

I am pleased to advise that the winner of our raffle "**Cards for all Occasions**" created by members of our Monday Papercraft Group was won by a local lady with ticket No. AA-68, who when contacted expressed her delight in winning such a lovely prize.

Christmas Display and Raffle

Any donations / hampers to be left in the box in the outer office for Robyn Killen to collect, prior to **5 November**. Robyn will collate into a large first prize, then hopefully a couple of other smaller prizes. Spinners & Weavers are combining with Fusion to donate a ham. Tickets go on sale from 10 November, with raffle drawn 22 December.

Christmas for sale items, are to be in the gallery prior to 10 November.



Embroidery Group

A small group of embroiderers met last Friday after the extended lockdown. It was great to get together at last and discuss and compare the embroidery work we have been doing at home. This Tuscan Scene cross stitch is one of the projects I have going at the moment.

Penelope



Port Stephens Community Arts Centre Newsletter

Saturday Painters Group

The Saturday Painters had their first meeting, after lockdown, on 23 October, and what a great turnout it was. So great to meet all our friends again after such a long break.

Don't forget our sessions are held monthly on the 2nd and 4th Saturdays of each month starting at 9:30am. I send a reminder for each session.

Any Mediums, and everyone welcome to join us. Assistance is available for new painters

Some of our painters have been producing some lovely work during the last six weeks. It has been a time to experiment and do the subjects that enthuse us, as seen in these photos. Norm Littlefair is really looking ahead and has finished a lovely copy of the "Girl with a Pearl Earring" after Vermeer, could this be the first entry for our next "Fabulous Fakes" when we have one?

Thanks also to all those artists that submit photos of their work during lockdown to Meryl Miller who did a great job putting them on video displays on Facebook.

Our next Exhibition "Port Paradise" will be hung on Wednesday 15 December, so, it is a good time to start new paintings of Harbour, Beach or Waters scenes now.



Unfortunately, due to Covid the 2022 Art Prize has been cancelled, but hopefully planning will resume in 2022 ready for an Art Prize in 2023.

Nikki Waters

Email: nikkiwaters@westnet.com.au

Monday Watercolour Painters

How lovely it is to say we will now be able to meet weekly at the Arts Centre. Hopefully in the near future we will be able to have more than our allocated nine in the Manoora Room. We have taken the opportunity in the last couple of weeks since we have been allowed to have a group of five together outdoors to meet at Fly Point for a paint-out. First week was lovely but second week the weather wasn't too good so we came home here and had a very pleasant morning.

We thank Meryl for posting our works on Facebook during the lock down period. Our group members have been working very hard in producing some lovely pieces to exhibit once we are open to the public again. We are all looking forward to getting back together with all our friends.

Nada O'Loughlin-Yonge Group Leader



Art Prize

After lengthy discussion regarding the uncertainty of COVID-19 implications, the decision was made to delay the Port Stephens Art Prize competition until 2023 instead of March 2022. Grant money will still be available, the Port Stephens Art Prize is a large money raising event for the Centre, it was felt we would have a more successful event if we wait.

Meryl Miller



Patchworker Bev Mackay

I am a patchoholic. Much to my painter father's dismay, I chose the needle instead of a paintbrush. I've always enjoyed embroidery and other crafts and wanted to learn patchwork when I retired in 2001.

I joined a class at Lyn Alchin's shop *Heart to Hands* at Leura with teacher Jackie Hens. The group known as the *Cotton Reel Quilters* continued to meet at her home at the completion of the course. I was inspired by some wonderful quilters including Chris Jurd and Ann Murray, continuing to learn and grow as a quilter. We went on retreat each year to stitch in peace for a few days.

When I joined the Community Arts Centre quilters group, I arranged for the group to have a retreat in the Blue Mountains and this has become a regular annual event in September. We've stayed in many lovely spots around the Hunter Valley and for the last few years at Tocal.

I continue to enjoy patchwork but have slowed down a bit due to ill health, I mostly focus on hand piercing and applique, trying to use up my fabric stash, which somehow,

mysteriously, keeps growing! I've made some great friends through patchwork, it's a lovely way to escape the real world and relax with fellow enthusiasts.

Bev Mackay



Stitches & Art

2/22 Donald Street, Nelson Bay, 2315
(02) 4984 2587

If you haven't had a chance to visit us in a while, please pop in next time you're around to see how we've expanded our range and grown with the support of our community.

- Fabric
- Haberdashery & Notions
- Wool
- Crochet and Knitting
- Cubbies
- Janome Machine Dealers
- Brother Machine Dealers
- Basic Machine Servicing
- Embroidery Services

www.stitchesandart.com | www.facebook.com/stitchesandart

Garden Group

What a delight it has been over the last few months to spend time in the garden, sometimes alone or with the other volunteers. Although the job at hand is never ending it is such a pleasure to be among such a beautiful array of plants. The orchids and the irises flowered together creating a great contrast of colour. The clivias threw out bursts of colour in the shaded areas and the Kangaroo paws are in full bloom. Everyone should take the time out to come and explore. We are so lucky to have the history of so many great gardeners that have put their love into this garden. The new and interesting plants that keep popping up are just amazing.

Our next working bee is earmarked for Tuesday 16th November. The main exercise will be to spread the mulch over the whole garden in preparation for the warmer months. And of course, there will be some weeding ☺. If you want to join us, please email me on loveoilco@bigpond.com or call me - 0415646060. It will be a 9am start so we can avoid the heat as much as possible. We have a jolly band of permanent helpers now but could always do with more. Call me if you want to join us.

We have a few projects in the garden that we are working on. Firstly is the cactus garden which Yvonne started with Frank. We are going to re-pot all of the succulents into terracotta pots and create a little walk around section on top of the old tank to the side of the Manoora room. If you have any spare terracotta pots lying around at home not being used, can you bring them in and leave them at the plant stall. The shabbier the better!

We are developing a series of paths that connect the Gnome garden and cactus garden so there is somewhere else for the kids to explore when they come to the centre. It is amazing how many visitors we get to our gardens throughout the day



and the kids absolutely love running around in it! We want to connect the oval side of the gardens with the rest of the centre so it will encourage people to explore all of the way around the building.

We are also looking at doing a big tidy up through the 'Christmas Bush' garden to revert it back to having mainly only natives. There



are already a lot of established plants including grevillas, bottle brush and proteas. We have already dug out a lot of the mondo grass and replaced with gazanias and dietes.

Potted plants for our plant stall are always welcome. You can leave them there from now as a lot of our

members like to browse.

Again a big thank you to all of our garden workers who are doing a brilliant job, and are enjoying themselves! It is very much appreciated and the feedback we get from the public is so encouraging. Keep up the good work!

Helen Love

Pottery Groups

During lockdown it has been difficult for the pottery enthusiasts to do any work, but now that we are able to meet again we are all looking forward to getting our creations fired and ready for the gallery. Here is a happy Jenny Crozier with her sexy ladies ready for firing.



Gallery Manager

Christmas Raffle

Our Christmas Hampers raffle tickets will be available from the gallery on 10 November. Please put your individual donations in the box in the outer office, or have hampers ready to be displayed on that date.

What's On

NOW

SHOWING:

What's On Your Plate? in the main gallery. All things deliciously edible – realistic, interpretive or futuristic. Come and see how our artists have interpreted this theme. There is also a display of pastel works in the Annex.

COMING SOON: The ***Christmas Display*** will feature in the Annex from 10 November to 22 December. Here you'll find a wide range of decorations and gifts with a Christmas theme.

In the Annex from 23 December to 26 January **Printmakers** will be displaying works featuring their range of printing techniques.

In the main gallery from 15 December to 25 January - **Port Paradise**, exploring the beauty of our bays, beaches, and sanctuaries. This is followed by **Australiana** from 26 January to 8 March. Here we'll be displaying works that celebrate our natural environment.



Gallery Manager Report

Having the art centre closed for such a long time certainly makes us aware of how much we missed the opportunities to gather together. In spite of the inconveniences that Covid regulations have imposed, there were so many positive comments, and expressions of delight, as our members returned to their creative sessions.

Thanks to everyone who has assisted with refreshing the gallery displays. This is a constant task, and needs constant efforts to maintain a clean, fresh look. If you sell your works in any of the display rooms, please keep an eye on the sales of your stock – deliver new items to the various storage areas, or remove things

that have been in the gallery more than six months. It may be that tags are looking tired, or you may consider adjusting the price to attract a buyer.

While we are all settling back into working in



the centre, the current gallery display will remain in place for a few more weeks. Please read the What's On section to see what's coming over the next few months.

Marianne, Judi, and I are in the process of planning the gallery Exhibition Calendar for 2022. If your group would like to take the opportunity of holding a display of your work in the Annex, please let me know as soon as possible.

Di Adamson

Life Drawing

We will resume on 5 November which will allow us to have a model as the Centre opens to the public. We have spent the COVID time drawing each other, still life and floral arrangements with the occasional model so we are looking forward to "Normality".

Robyn Bailey



Potter of the Month

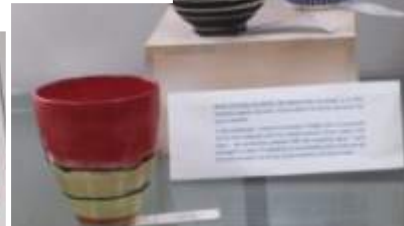
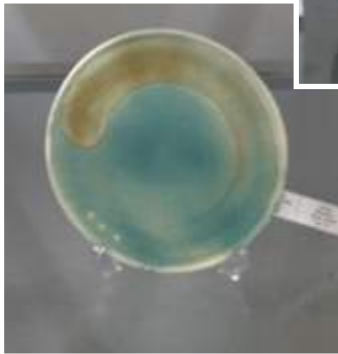
Riko Eguchi

Looking at Riko's work, it's surprising to hear that she only began pottery when she moved to the Bay in 2017.

She says, "When I was young my Japanese parents encouraged me to put all my time and effort into academic studies and not into 'arty stuff'. So I went on to have a career in banking and corporate finance.

I was encouraged by my partner and by the local pizza man to visit PSCAC and try pottery. I was hooked after my first 'come and try day'. My first throw on a wheel was with my partner on an old stand-up wheel picked up from a kerbside clean up.

One of the hardest things for me is finding my expression. My preference is to throw clay (mainly porcelain) and am constantly working to improve my technique and try new forms. With TAFE courses and



workshops, I have deepened my knowledge and appreciation of clay work. I'm currently researching glazes and the history of pottery. Ironically, I am told my work expresses my Japanese heritage. So, while my parents were not in favour of me doing 'arty stuff', it seems I have absorbed a Japanese style by osmosis: through the

crockery and artwork I grew up with.

I do love the considerable amount of thought the Japanese masters put into their work. How their form and glaze complement their dish. I love

how they contemplate the marriage of functionality and aesthetic. I aspire to bring that to my work. With my experimentation with oxides, I've also attempted to let the clay 'speak' for itself. I hope you enjoy my pots as much as I do.

Riko

Tai Chi

We are presently meeting Monday and Thursday mornings 10-11am at Taylors Beach on the waterfront, left side of the pier. Roy Wood Reserve became very crowded once groups could meet outside so after consideration we decided to move at least till things settle down.

Robyn Bailey



Port Stephens Community Arts Centre Newsletter

Woodies

It was wonderful to open the shed for fully vaccinated members on the 11th October.

As we continue to learn to live with the "new norm" it makes us appreciate how lucky we are to live here in Paradise.

This unique Australian native animals chess set was beautifully handcrafted by our very talented members and it's this year's main fundraiser.

More information on the chess set, other prizes and purchase of tickets can be found at: <https://rafflelink.com.au/pscwchesssetraffle>

The chess pieces are:

Kings: Kangaroos

Queens: Kangaroos with joey

Bishops: Koalas

Knights: Tasmanian Devils

Rooks: Possums

Pawns: Wombats



Only \$2.00 each ticket

A huge thank you to all the supporters.

Ines Thomas



Monday Morning Painters

Hi All,

I have taken over from Stafford as leader of the Monday Morning Painters. We're back for painting, but only have had a handful of members return so far, I'm sure others will return when they feel safe.

You must be doubled Vaxed and show proof. I hope you have all been busy and creating wonderful paintings while in lockdown. We are all looking forward to the new exhibition of 'Port Paradise' See you soon.

Moira Coulson

Plein Air Painters

We have been very quiet working on scenes from windows, verandahs, own gardens etc. However the beauty and relative isolation of Taylor's Beach is our new location.

Robyn



Port Stephens Community Arts Centre Newsletter

Paper Craft

Since the lock down restrictions were eased a small group of our members met for a picnic at Dutchies Beach.

Some of us have been able to meet with restricted numbers to resume our weekly Paper Craft activities, however we are all rearing to get back to regular sessions without limited numbers.... whenever that is possible. Our Monthly Challenges have continued throughout the lock down period with some very creative results.

On 25 October twenty members of our group celebrated Leonie's special birthday with a party held on the verandah outside the cafe. Everyone enjoyed meeting as a whole group. There was plenty of chatting and laughing. How we all love a party!!!

CHRISTMAS CARDS

Christmas cards will be on sale as from Tuesday, 2 November. As in previous years the cards will be on a special stand in the Gallery. The stand will be removed on 24 December.

CHRISTMAS RAFFLE

As in previous years the Paper Craft Group will prepare a box of greeting cards (not Christmas cards) as our contribution.



END OF YEAR LUNCHEON

Monday 6 December

LAST DAY OF PAPER CRAFT FOR 2021

Monday 13 December



FIRST DAY OF PAPER CRAFT FOR 2022

Monday 10 January

Although 2021 has been another disrupted year for us the group has produced some quite amazing Paper Craft items. We are all hoping for an even more productive year in 2022. Thank you to all the people who have supported our craft by purchasing our cards etc.

Wishing you all a happy end of year and a great 2022.

Best wishes from

Helen and Fellow Paper Craft Members

Mosaic Group

We are all glad to be back and are looking forward to an uninterrupted year in 2022. See the photo of some work that Maxine Thomas and Margaret Brace, a couple of our very talented ladies here at mosaics, have done for our upcoming exhibition.

Ruth Conely

