



PORT STEPHENS COMMUNITY ARTS CENTRE

April 2024

Cultural Close, off Shoal Bay Road, NELSON BAY. 2315

In this issue:

- President's Report
- Patchwork Groups
- Quilt Exhibition Photos
- Gallery Manager
- Pottery Groups
- Monday PM Painters
- Embroidery Group
- Spinners and Weavers
- Monday PM Watercolorists
- Monday AM Painters
- Sales & Name Tags
- Embroidery Group
- Spinners & Weavers
- Saturday Craft
- Pottery Groups
- Exhibition Team
- Exploring Art/Pastels
- The Woodies
- Bonsai Group
- News From the Fairy Garden
- Monday PM Mixed Media
- Featured Potters
- Papercraft
- Fusion Group
- Public Holidays

President's Report

Thanks everyone for your co-operation during the refurbishment of our Building.

Congratulations to Sharon Turley, Wendy Barwick, and the entire quilting group for orchestrating a truly spectacular Quilt Exhibition. We are incredibly fortunate to have such a wealth of talent among our members at the Arts Centre. During my time at the Gallery, it was a joy to witness firsthand the sheer delight expressed by the steady stream of visitors as they admired the exquisite quilts on display. It was particularly heartening to note, that many men were captivated by the intricate craftsmanship evident in each quilt.

Thank You to Port Stephens Council for the Micro Grant which allowed prizes for the Quilt Exhibition.

Una Greco awarded the overall winner "*Swim Sister Dreaming*".

Wendy Nutt won Postcard Challenge

with '#308'.

Francine Inglis Hangers award Gallery '*Life is Beautiful*'.

Sharon Turley won the Hangers within the Westralia Room '*Paradise in Bloom*'.

Our Papercraft group joined in the excitement with beautiful cards to match the theme.

When she was announced the winner, the emotional Una told the story of the winning quilt. "Upon receiving the news that, she would become a grandmother to a little girl Una decided to create a pram cover for her baby granddaughter. Chelsea Una soon outgrew her pram cover and Una received a special request from her granddaughter, who asked for a beautiful quilt to adorn her bed. Grandma Una was up for the challenge, from a small hand sewn pram cover to a queen-size masterpiece. With determination in her heart, Una set out to create

(Continued on page 2)



Port Stephens Community Arts Centre Newsletter

(Continued from page 1)

something truly extraordinary for her beloved granddaughter.



Una Greco and Judge Jan

Una poured all her love and skill into every stitch, knowing that this quilt would hold a special place in Chelsea's heart. Incorporating hexagons from the pram cover and inspired by items that are important to both Una and Chelsea, like a dog, bats flying overhead and the gentle gondoliers from her Italian heritage, plus all fantasy items that delight Chelsea. Una poured her creativity into every detail. While Una worked tirelessly on the quilt, she never dreamed that her creativity and skill of creating her hand sewn quilt would one day allow her to win a prize in the Nelson Bay Quilters 2024 Quilt Show. When the judge, Jan from Anna Bay Quilters, announced Una as the winner for her quilt **'Swim Sister Dreaming'** - Size 203x243cm, Technique Hand and Machine Pieced, Hand and Machine Quilted, it was a moment of pure surprise and joy, one that Una will never forget. Una has a second granddaughter so is working on her

next huge project. Chelsea is now 10 years old and treasures her quilt.

For the 30th Anniversary of signing the Wetlands agreement with our Sister City Kushiro. A talk will be held in the Westralia Room at 12:30pm on Tuesday 7 May. The talk will be by the



Hunter Bird Observers who will be informing artists about Shorebirds including the *Latham's Snipe*. An expert on Wetland habitat will also be speaking. Both presenters will be showing photos that may inspire your creativity.

Port Stephens Council have provided an opportunity for Artists to have work displayed on the **Yacaaba walk in Nelson Bay**. The Arts Centre can provide two art works. If you would like to participate, please contact Meryl. The Artwork needs to be completed by the end of May and a photo submitted to Council first week of June to be reproduced for the Yaccaba Walk. If we have more than two who would like to take part we will draw the names of two people out of a hat. You can choose to paint a shorebird that lives in the Mambo Wetlands or Fauna and Flora from the Wetlands. Please let Meryl know by the end of April if you would like to participate.

To avoid incidents within The Barn please double-check that all doors, including the roller door, are securely locked before leaving. Recent incidents indicate unsecured access. Even if your group doesn't use the roller door, ensure it's locked before departing. Additionally, remember to close all window roller shutters for fire safety compliance.

Happy Easter to all Members and their families.

In the end these things matter most:

How well did you love?

How fully did you live?

How deeply did you learn to let go?

Meryl

Patchwork

A very successful Quilt and Postcard exhibition with a total of 92 quilts on show. The gallery has been kept busy with sales of the postcards, patchwork bags and other goods on display.

A morning tea was held at the cafe for the opening. A huge thankyou to Lynette Penfold who managed the cafe with the support of the members from Tuesday and Thursday Patchwork.

The display of the quilts will continue in the main gallery until 17 April and raffle tickets are still available for purchase.

Sharon Turley



Port Stephens Community Arts Centre Newsletter



Paradise in Bloom - Sharon Turley



Life is Beautiful - Francine Inglis



Cone Flower Collage
Sally O'Neill



Bag Lotto



Toy Box - Melinda Hope



Sri Lankan Memories
- Sheila Francis

Gallery Manager

Holding special events at our centre is so worthwhile! We all owe a vote of thanks to the team who organised and ran the Quilt Show. Several quilts sold, and the number of visitors and customers in the gallery was greatly increased.

Our next event will be the Spring Affair on Saturday 7 September. We will hold a planning meeting on Thursday 27 June, so please come along with your ideas for enhancing the program on this open-day. The meeting will be at 12 noon in the Manoora room.

During November we will be participating in the sister-city cultural exchange program with Kushiro, Japan. Latham's Snipe – a wetlands bird – migrates between our two areas. It is the hero of this celebration. As well as hosting the farewell event for delegates, we will hold a Wetlands Exhibition in our gallery. Let's put on a great display of all our talents – paintings, craftworks, sculptures, soft toys . . . whatever your creative imaginations can envisage! More details will follow in

the next few months.

With the increase in sales, some of our craft shelves are looking a little bare. If you have come up with a new idea for items to sell, or if you see that we are running short on any of the items you regularly supply, please put some more of those goodies into the New Stock drawer in the wrap room. Sally regularly checks and replenishes the gallery shelves.

Di Adamson



Monday PM Watercolour Painters

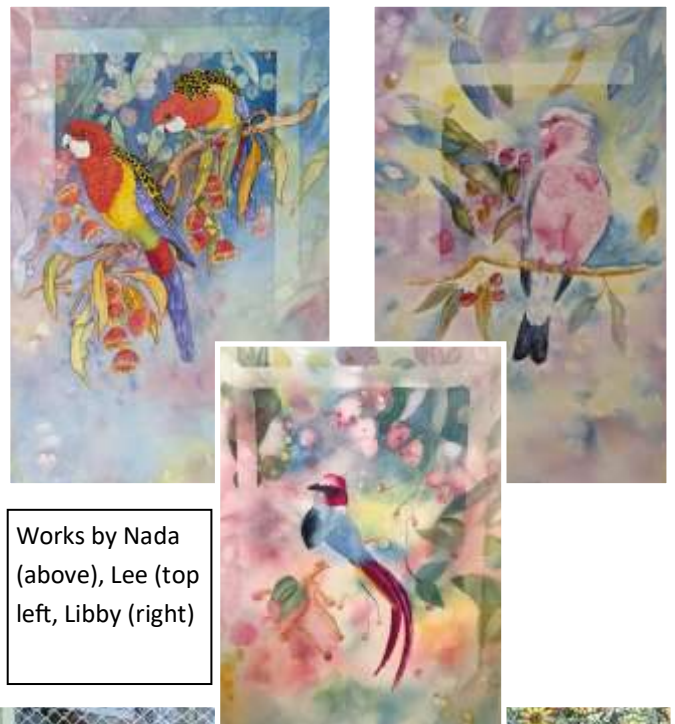
It is lovely to have everyone back after the Christmas break and great to see everyone enjoying our get together. We had a watercolour full day workshop recently where we all produced some amazing works on Australian birds, with 16 of our group attending. These photos are just a couple of works started on the day. It was quiet a lengthy procedure and a lot of different watercolour techniques were used to get to the final results. There is always something new to learn with watercolour.

We also took the opportunity to get together for a luncheon while the quilt show was on.

Well done to all the Quilters for putting on such a fantastic show and how good did the centre look all bright and colourful. Paintings for our next exhibition are due at centre before 17 April, plenty of time to get painting and finish off all our bird paintings.

As long as you don't use the tutor's reference it is fine to display the paintings created at the workshop, very suitable for the Flora and Fauna Exhibition.

Nada O'Loughlin-Yonge



Works by Nada (above), Lee (top left), Libby (right)



Port Stephens Community Arts Centre Newsletter

Monday AM Painters

A big thank you to our Monday painters who contributed to our recent Annex Wall painting Exhibition. From the positive comments received, it was well liked and proved that to display as a group encourages friendly competition which in turn results in personal improvement. It was lovely to be back in situ last Monday for yet another morning of laughter,

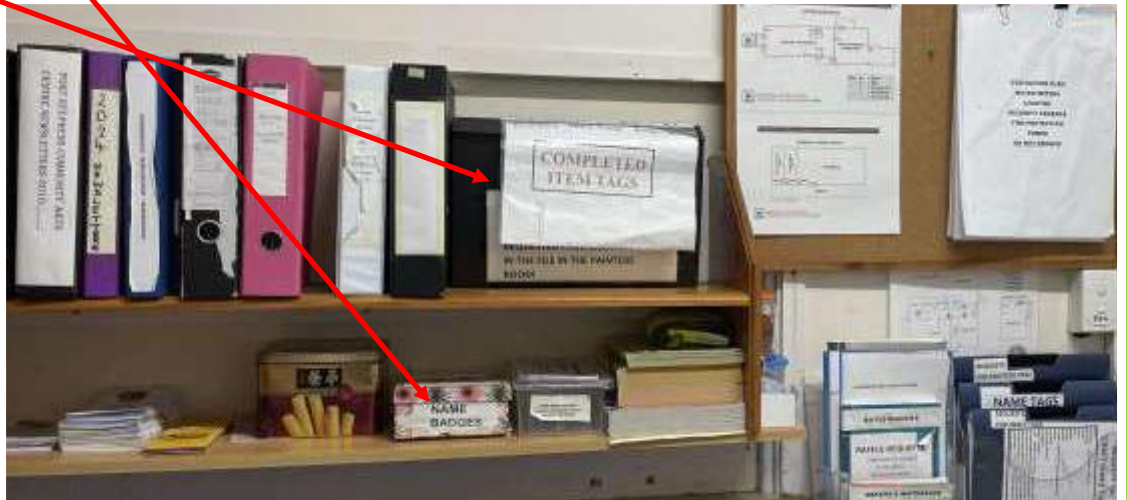
friendship and painting.

Congratulation to our Quilters on yet another wonderful exhibition.

Robyn Killen

Sales Tags and Name Tags

Could all members who have requested Sales Tags or Name Tags in recent months, please check the appropriate files in the outer office and take their tags home. There are a number of tags that have been in the files for months.



Embroidery Group

Chantal has completed her 75cm x 35cm complex Blackwork project and its looking gorgeous. Well done Chantal.

Lyn is continuing to work on her mandala blackwork. Wendy is finishing a piece with sailing boats that she started a while ago. Noela has made a few book marks and scissor keepers.

Joanne, who is visiting from New Zealand and house sitting for a friend, has been working on a colourful cross stitch. The rest of us are all stitching happily!

Penelope



Spinners and Weavers

FIRST PRIZE AT THE 2024 SYDNEY ROYAL EASTER SHOW!

Congratulations to Tracey, one of our Spinners & Weavers, for winning *First Prize* at the 2024 Sydney Royal Easter Show. She was also awarded the *Ribbon for Standard of Excellence*.

Tracey's lace shawl was knitted from handspun and plied raw merino fleece and was placed first from ten finalists. The shawl represents hours of effort preparing the fleece, spinning and plying the fibre and then knitting this finely detailed and complicated pattern. Well worth all the effort Tracey.

We look forward to helping you celebrate.

Melanie Delaney



Saturday Craft

A new monthly craft session started on Saturday 23 March. We had a fantastic group of 12 people keen to learn basic techniques used in Bookbinding. We made an Accordion Journal and a note book. We also had a demonstration showing how signature sections of a book are sewn together. Thanks to all who attended to make this a successful day.



Each month attendees will discuss crafts that they wouldn't normally do and would make a good group activity.

On Saturday 20 April you can join in with **'Get Creative With Beads'**.

If you would like to join in please leave your name on the list on the Westralia Room Notice Board.

Keep an eye out on the notice board for what craft is decided on for Mid May.

If you have any suggestions for future activities there will also be a place on the notice board to leave your ideas.

Wendy Lane

0412 196243 text only please!



Pottery Groups

CLAY ON THE WALL

Please remember that *'Clay on the Wall'* in the gallery annexe is from the 9th July-20th August.

Time to make something completely different, mixed media is good as long as the main medium is clay. Exploration is welcome!

Remember that work must be light enough to hang on the gallery system and have a good attachment or hanging solution.

So get going on those ideas folks!

Any queries please email me.

Carole Driver

caroledriver@gmail.com

Safety issues well in control at the Potters Barn



Exhibition Team

Current Exhibition

Congratulations Patchwork Groups! PSCAC was buzzing with visitors who loved your interesting quilt designs.

Calling All Painters!

We're gearing up for our next exhibition, but we encountered a shortage of paintings for the Easter Delights theme. Our hanging team welcomes any themed painting as long as it's new stock.

Themes are just a springboard for your creativity, so let your imagination soar.

Upcoming Exhibition

Theme: Flora & Fauna 4/24

The painters gallery reopens on April 17, 2024 with a vibrant

showcase of our members' paintings.

Two paintings per artist are welcome. Hall paintings remain.

For the Mixed Media Annex Area, please contact Bev Henry for details.

Friendly Reminders:

- Please clearly mark your artwork with the correct exhibition date (4/24 for April 2024).
- Kindly collect your previous works from the storeroom on a regular basis.

We appreciate your cooperation and look forward to seeing your artistic brilliance in the upcoming exhibition!

Marianne, Judy, Bev and The Team.

Exploring Art/Pastels

Wednesday 9.30 to 12.30

The group has met a few times and have enjoyed exploring mark making through various mediums....pencil (lower centre right), watercolour, (lower left) pen and collagraph printing (above right), Collage and over drawing (lower far right) so far.

All of our activities are then used to extend our Art Practice. We have created folding sketch books, backgrounds for mixed media pieces and foundations for paintings.

Christine Leaming



The Woodies

Dinner Cruise.

The Woodies had a 3 hour dinner cruise on 6 March, on the sail boat *Imagine*, skippered by Frank Future, our Patron. It was a beautiful, warm night and we had a very nice BBQ fish dinner, followed by dessert and coffee and, of course, a licensed bar. There were seven people from the Arts Centre who joined us: Jan and Guy Bevan, Nada and Geoff Yonge, Madeleine Quinlan, Kim Reilly and Mary Richards and a good time was had by all.

Morning Tea Area.

Our updated morning tea area is now finished and we have our Occupation Certificate from Council. The next step is to organise an official opening when we hope to have Kate Washington and Meryl Swanson join us. PSCAC members welcome of course, so look out for the date.

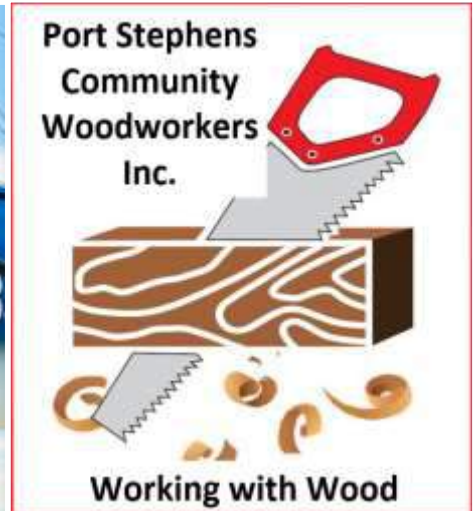
Constitution.

The Woodies updated their constitution to the new 2022 Fair Trading template. Not our favourite subject but necessary to avoid the confusion of having the new template override the old one. All the specifics for our club including the charitable requirements were carried over and we also adopted the banner picture as our new official logo.

Roger Delaney



Frank Future unfurling the sail.



Bonsai Group

The group has been very busy in the last 2 months and has welcomed two new members. On the 20 February eight members took a trip to Bonsai World in Jilliby in spite of the rain and spent lots on new pots, tools and plants. This was followed by a lovely lunch at The Milk Factory.

Liz gave a talk and demonstration on making artificial rocks. The trees are having their last trims and fertilising before Autumn and Winter set in after a very hot Summer.

Happy Bonsaing!

Carol



News from the Fairy Garden

The elves and fairies that live in the beautiful Fairy Garden are very excited that so many girls and boys are visiting us and many of them write us letters which always make us very happy.

Sadly a few children have forgotten to write their address so we cannot reply to their letters. Thank you to the parents and grandparents who make sure the address is complete and can be read easily.

Several children have said how much they like the new glittery letter box so thank you to the people who made it. The previous letter box was very popular with the white ants as well as with the visitors to the garden and many children



were sad when it fell apart. A special thank you goes to the wonderful people who keep the garden beautiful and an exciting place to visit. We hope to see lots of children visiting the Fairy Garden during the Easter and the school holidays.

Love from
Felicity the Fairy
and all the fairies and elves that live in the Garden.

Monday PM Mixed Media

Annex Wall Exhibit (April 17 - May 28)

Hey everyone!

We've been invited to showcase our work on the Annex Wall from April 17 to May 28! Since space is limited, I'm focusing on creating a series of **medium-sized mixed media pieces** for this exhibit. This will allow for a wider variety of artwork from our group to be displayed.

Remember the amazing textured techniques we learned from Jill Campbell's workshop? Unfortunately the artwork created in Jill's workshop cannot be displayed to sell but your newly found skills will come to light.

Let me know if you have any questions or ideas to contribute.

Bev Henry



FEATURED POTTERS Maree Dohnt

Maree joined the pottery group a few years ago with the aim of making a bowl for herself. Little did she know that she would be hooked and that ceramics would become an important part of her life.

Being at the wheel is very therapeutic.

Maree's pieces tend to be small in scale, and they have a sense of fun and playfulness while still retaining a practical use. Although being functional pieces designed to be used, Maree likes to embellish them and likes working with



underglaze, and transfers to add colour, or she carves the surface to add texture to the body of the piece.



Annette Buivydas

Annette's pieces often feature designs of birds & flowers, reflecting the beauty of the world around us. Being of Lithuanian heritage, her childhood memories of decorating eggs at Easter has inspired her to create and decorate these forms out of clay. Annette has been a member of the Pottery Barn at the Port Stephens Community Art Centre for six years, however her interest in Pottery began 30yrs ago after visiting a Wedgwood exhibition in London

It wasn't until moving to Port Stephens and joining the Pottery Barn that Annette had the opportunity to

pursue her dream of creating her own work. She said she was grateful for the supportive community at the Port Stephens Pottery Barn that has helped her grow as a potter.



Port Stephens Community Arts Centre Newsletter

PAPERCRAFT

We have had a busy time making craft-themed cards to accompany the QUILT SHOW and have trialled some Easter cards for the current exhibition.

Although our current focus is card backgrounds, many members just enjoy sharing tips and ideas.

Antonia



FUSION GROUP

In February our group had two Eco printing sessions led by Lesley which produced some lovely, interesting images on fabric and paper. Some of these can be seen now in the Gallery and there are more to come. All of the group members are keen to further explore this technique so we hope to have another session in April. In March we worked on various creations using vintage fabrics, beads and laces.

Our group continues to grow and evolve with two new members welcomed this month, Brenda and Ali.

Carolyn



PUBLIC HOLIDAYS 2024 WHEN THE ARTS CENTRE WILL BE CLOSED

Monday 1 April - Easter Monday - Open

Thursday 25 April - Anzac Day - **Closed in morning**

Monday 10 June - King's Birthday - Open

Monday 7 October - Labour Day - Open

Tuesday 24 December - **Closed in afternoon**

Wednesday 25 December - Christmas Day - **Closed**

Thursday 26 December - Boxing Day - Open

Tuesday 31 December - New Years Eve - **Closed in afternoon**

Wednesday 1 January - New Years Day - **Closed**

Port Stephens Community Arts Centre Newsletter

Tai Chi

Since we missed the 1st newsletter for the year due to black outs in my area I am including some of the group at our Christmas lunch. We are enjoying our location and hours together despite insect life, we regularly see swans, ducks and Koalas and twice Tawny Frogmouth Owls. We have quite a list of forms that we know including The Yang Sword.



Robyn Bailey

Plein Air

Since Christmas we have been to the Lily Pond Salamander (right) and Boat Harbour (far right). Currently still at Boat Harbour south side of beach.

We are planning a day away at Morpeth, Hinton with some of the Tai Chi group where we will catch up with members of other groups we have met in our travels. Should be fun, Tai Chi, paint/draw, lunch and probably two or three repeats.

Robyn Bailey



Life Drawing

Unfortunately numbers are dwindling for many reasons not least ill health, hopefully things will improve in time. However we would like to extend an invitation to anyone who is interested in joining us. Our costs are \$15 for model and morning tea and \$2 for centre.

Robyn Bailey



Garden News

What we have been doing.

Lots of pruning has been happening in the last few months and now that we have had a bit of rain, I am sure there will be lots of weeding to be done.

Note to all members

We seem to be having plants taken from the propagation area which is really disappointing. If any members see anyone lurking in the area, can



you please let me know. These plants are for us to sell so we can put the funds back into the garden.

Garden Gossip

Wayne our wonder worker has left the garden after doing two years helping out.....and did an awesome job. We now have a newbie named Geoff so give him a warm welcome if you see him about.

Autumn News

Our Fairy Garden is in need of new mystical trinkets for the kids to enjoy as it needs a spruce up. Any donations would be gladly welcome.

Helen Love